

An aerial photograph of a large, multi-story country estate with a complex roofline, multiple chimneys, and dormer windows. The house is surrounded by lush green lawns, manicured hedges, and a large swimming pool with a stone deck. In the background, rolling hills covered in dense green forest stretch towards the horizon under a bright blue sky with scattered white clouds.

# COUNTRY CHATEAU

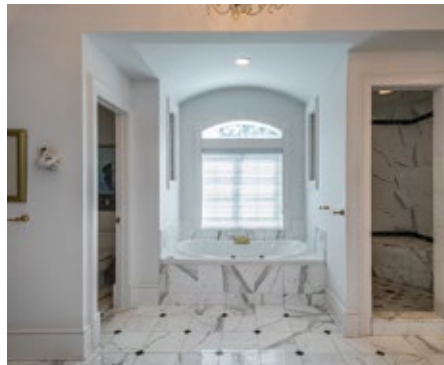
Bridgewater, Connecticut

**KLEMM REAL ESTATE**<sub>Inc</sub>  
LITCHFIELD COUNTY'S PREMIER BROKERS



# Country Chateau, Bridgewater, CT

French Chateau in Bridgewater. Considered one of the most coveted streets in the surrounding areas. Stone wall with gated entrance. Double height foyer. Atrium living room with wall of French doors and marble fireplace. Sexy bar leads to the library. Open & gourmet kitchen with fireplace and butler's pantry. Formal dining room. First floor primary suite with marble bath and massive walk-in closet. Billiards room and 2 half baths. Upstairs guest rooms are both with en-suite baths. Fabulous terrace is accessed from most every room overlooks the lush grounds, Gunite pool with spa, cabana and views. Complete privacy on a prestigious street with a majestic presence. The lower level with an additional 1/2 bath and 4 car parking spaces. Detached garage with 4 additional bays and one oversized for a boat and an upstairs loft that could be finished. The boat launch to Lake Lillinonah is just at the end of the street. Generator. The property has been meticulously maintained and is magical. This is a true, trophy property not to be missed. Quintessential New England at its best.



## Property Features

- Gated Entrance
- 1st Floor Primary Suite
- 2 Fireplaces
- Pool/Spa
- Garaging for 8 Cars

**#1 for Selling & Renting Fine Country Properties!**

**KLEMM REAL ESTATE Inc**  
LITCHFIELD COUNTY'S PREMIER BROKERS

Lakeville/Salisbury 860.435.6789 > Litchfield 860.567.5060 > New Preston 860.868.0505  
Roxbury 860.354.3263 > Sharon 860.364.5993 > Washington Depot 860.868.7313 > Woodbury 203.263.4040

**klemmrealestate.com**

## Property Data

370 Northrup Street  
Bridgewater, CT

11	4	3/3	4,531	15.19±
RMS	BEDS	BATHS	SQFT	ACRES

**Price:** Upon Request

**Listing Agent:** Joseph Lorino  
860.868.7313 Ext. 110

All Data to be confirmed by Buyer.